

Forerunner Mobilizer Named Parameter Sets

Introduction

With Forerunner Mobilizer Named Parameter Sets end users can now save multiple sets of named parameters on any reports. Named parameter sets can be specific to each user or shared for all users. This feature makes it fast and easy have personalized default parameters or to change between parameters especially when the report has many parameters.

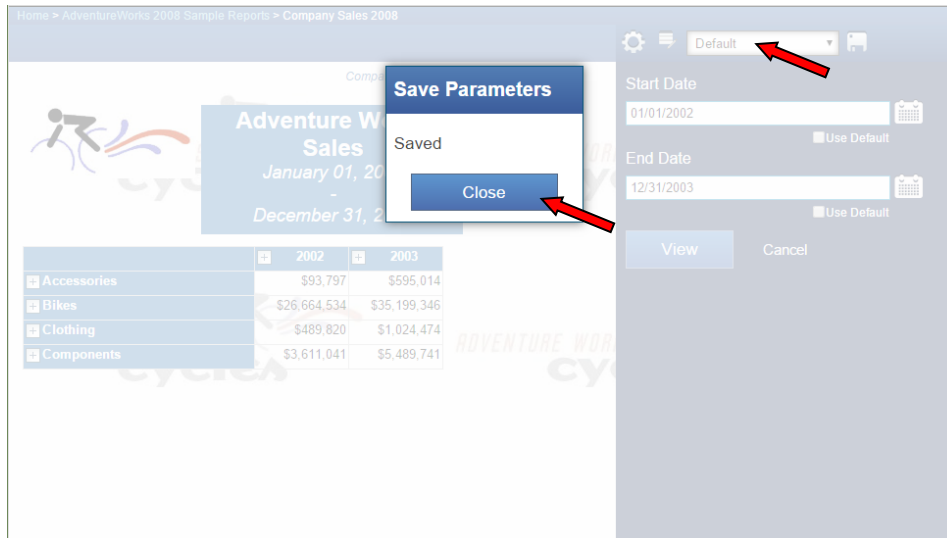
Creating a Default Set

The quickest way to create a named parameter set is to create a “default” set as follows:

- 1) Browser to a report and open the parameter pane.
- 2) Set the parameter values that you want.
- 3) Save your new values by selecting the “Save Parameters” button. If no set has been defined previously a new set will be created with the name “Default”.

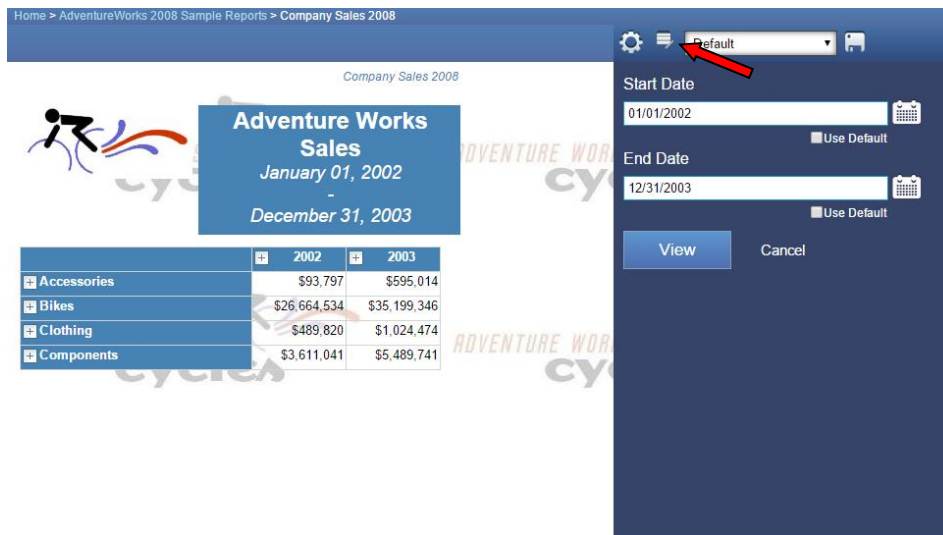
	2002	2003
Accessories	\$93,797	\$595,014
Bikes	\$26,664,534	\$35,199,346
Clothing	\$489,820	\$1,024,474
Components	\$3,611,041	\$5,489,741

- 4) You will get a confirmation dialog and the “Select Set” drop down will change to “Default” as follows:

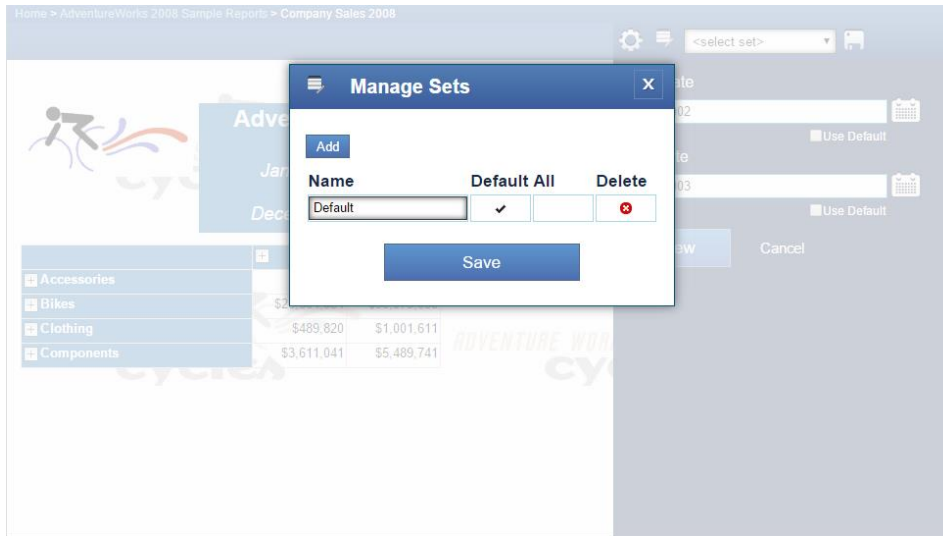


Manage Sets Dialog

Managing any number of named sets is done via the Manage Sets dialog. You launch the Manage Sets dialog from the Parameter Pane toolbar as follows:



Which brings up the dialog as follows:



You can see that the “Default” set is listed here. Each set is defined by four columns as follows:

Name

This is the name of the set. This name will show up in the “Select Set” drop down on the parameter pane toolbar.

Default

You can designate one set as your default set. This set will be loaded when you browse to the report

All

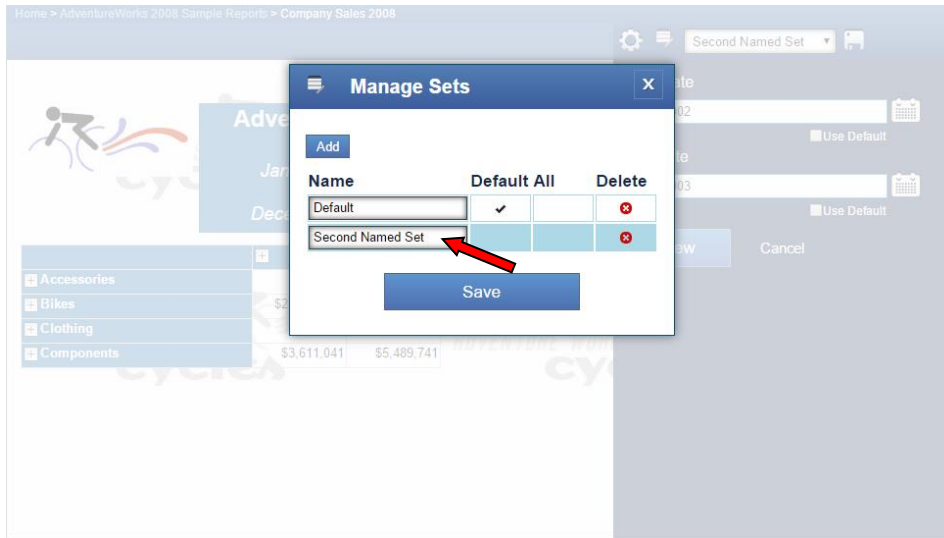
The “All” column allows you to designate a set as visible to all users. Note that you must have “Content Manager” permission to be able to set this value.

Delete

This button will remove the given named set

Adding a New Set

You can add as many named sets as you like using the “Add” button. In the dialog below, I added a new set named “Second Named Set”. When you “Add” a set with the “Add” button the parameter values will be set to the current values in the parameter pane. See the [section below](#) for instructions how to change values after a set has been created.



Changing Values in a Named Set

You can change the parameter values in a named set as follows:

- 1) Select the named set you want to modify from the “Select Set” drop down



- 2) Change any / all parameter values you want
- 3) Select the “Save Parameters” button


The “Save Parameters” button will save the parameter values for the currently selected set. If no sets exist then a new set named “Default” will be created.

Selecting a Named Set

Once you have defined one or more named sets you can select the set you want to use using the “Select Set” dropdown control in the parameter pane toolbar:

Home > AdventureWorks 2008 Sample Reports > Company Sales 2008

Company Sales 2008



Adventure Works Sales
January 01, 2002
-
December 07, 2003

	2002	2003
Accessories	\$93,797	\$545,193
Bikes	\$26,664,534	\$33,975,058
Clothing	\$489,820	\$1,001,611
Components	\$3,611,041	\$5,489,741

ADVENTURE WORKS CYCLES

ADVENTURE WORKS CYCLES

ADVENTURE WORKS CYCLES

ADVENTURE WORKS CYCLES

Second Named Set

<select set>

Default

Second Named Set

01/01/2002

Use Default

End Date

12/07/2003

Use Default

View

Cancel

You can see in the image above the “Second Name Set” is highlighted in the dropdown. Selecting the set will make all the parameter values active, run the report and close the parameter pane.